

Sunset Art Studios

a social practice studio



SUNSET
art studios

Bru
Balmer
Av
1300





Rachel Rushing + Emily Riggert

studio partners, social practice artists, educators

Our Goal: Create open access to the arts

We did this by

- (for artists) removing economic barriers to producing work
- (for non-artists) removing geographic and social barriers to seeing art and engaging with artists.

Sunset Residents



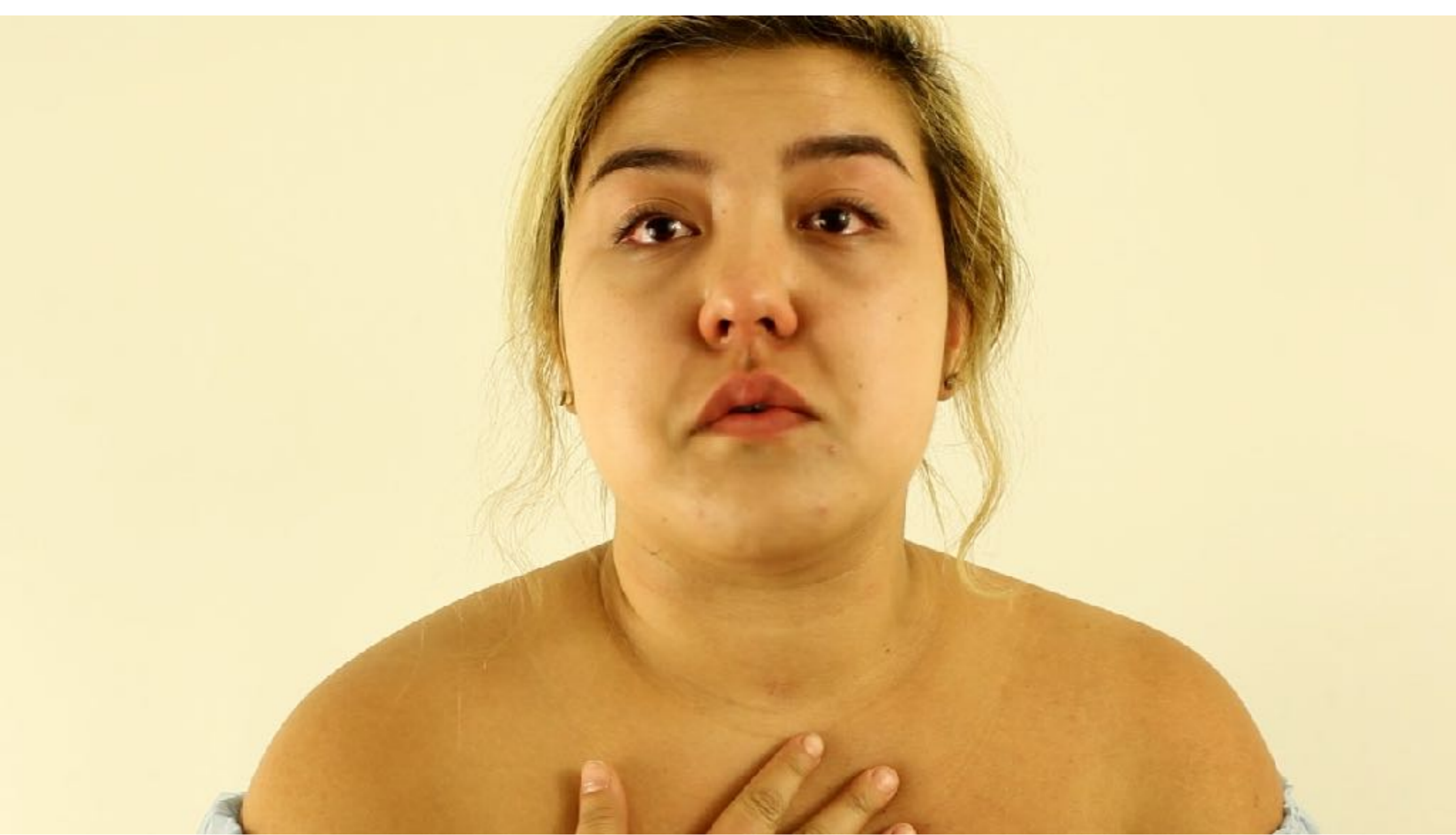
Chesley Antoinette

June - July, 2016



Kellie Spano

September - October, 2016



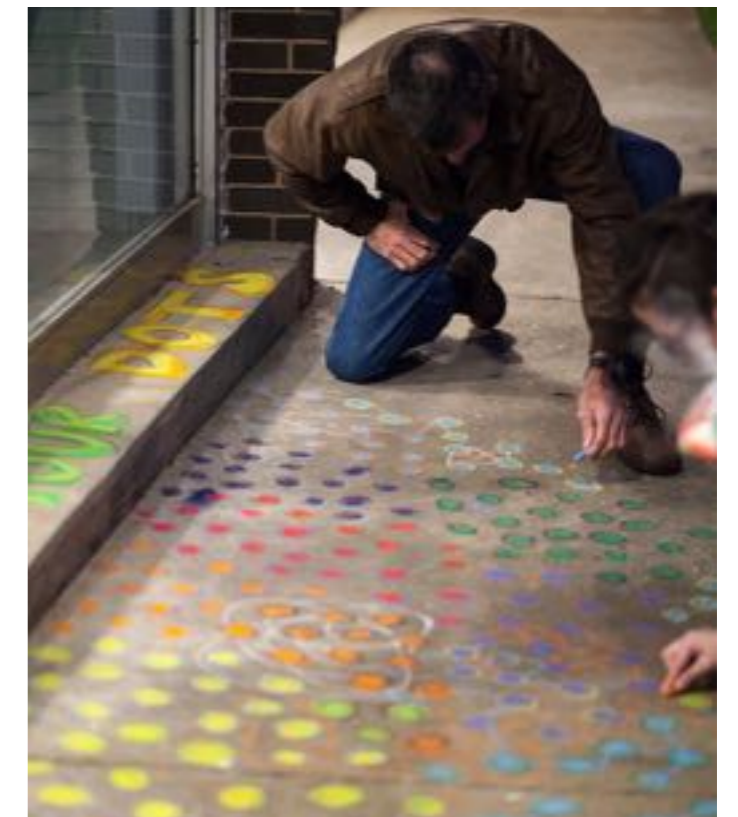
The Crying Room

October, 2016



Alli Rogers

February, 2017



Interfacing: Meet & Build, February 2017

Community Projects



Dog Days

August 2016



Dog Days, August, 2016



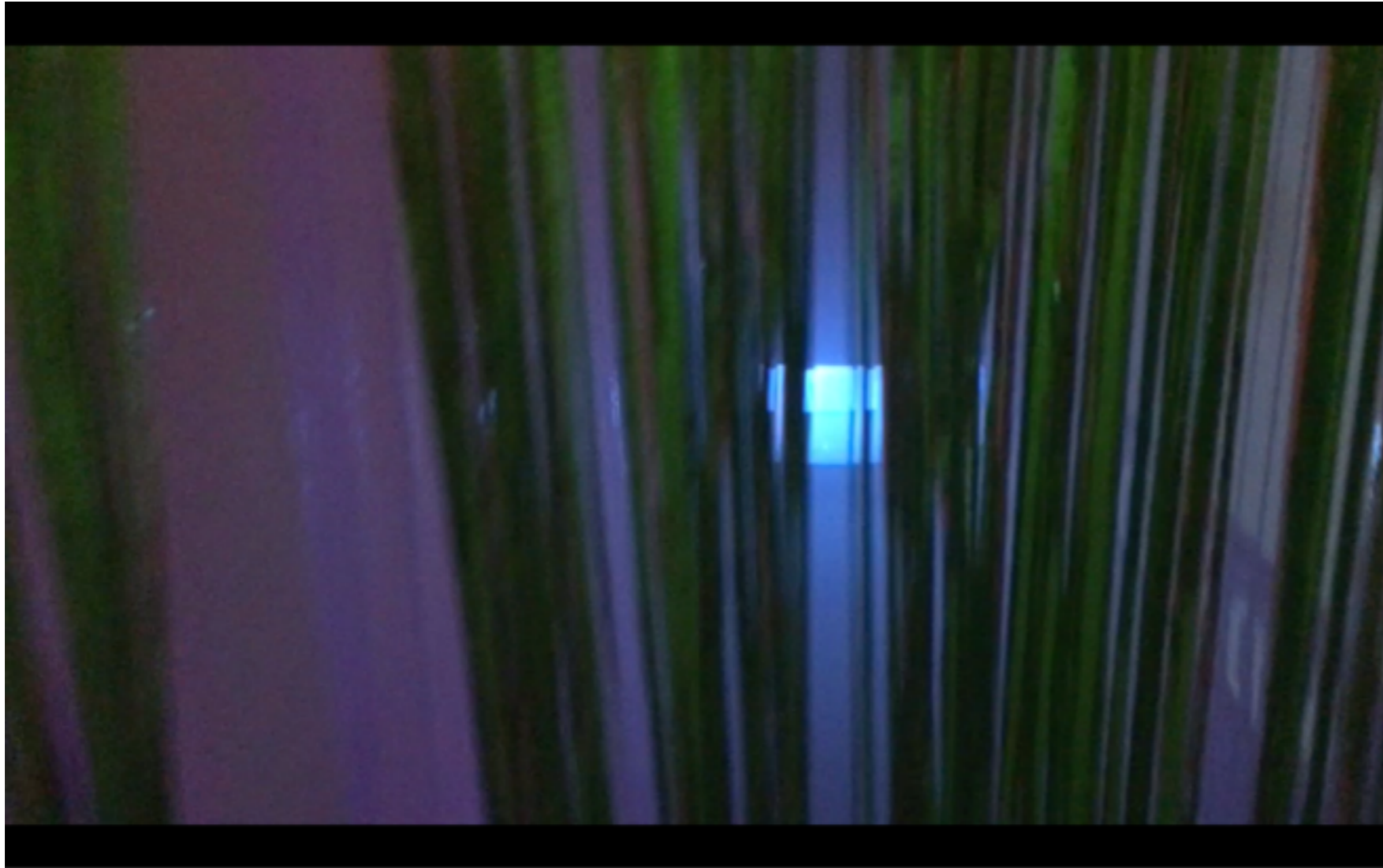
Dog Days

August 2016



Art Haunt

October, 2016



Art Haunt, 2016

Pop-up Shows



Nasty Women Exhibition, March 2017

Principles of Access

- Solidarity
- Diversity in Representation
- Support